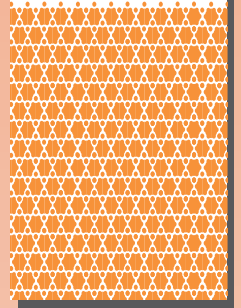
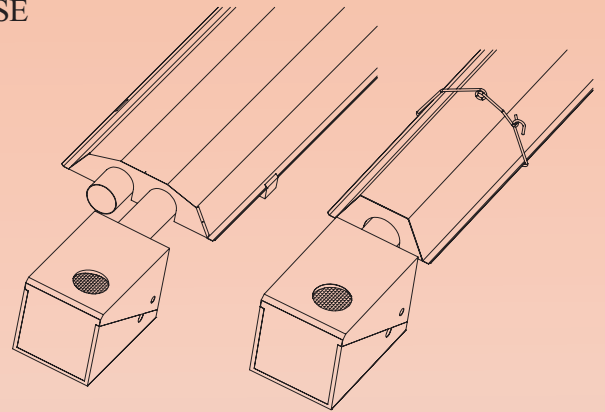


SE Series



Schwank's expanded line of top-performing infra-red tube heaters

Get the perfect balance of performance and economy with Schwank SE Series tube heaters. This expanded line of economy tube heaters is priced to beat the competition, yet SE Series tube heaters have many of the features in Schwank's top-of-the-line STSp tube heaters. Plus SE Series tube heaters come with a unique ten-year parts replacement warranty on the ceramic burner!



Why SE Series tube heaters outperform the competition

Features	Benefits
Schwank Ceramic Burner	Extended flame length More even heating Increased energy efficiency
Fold-down burner housing	Exposes all controls for easy servicing even when heater is on Burner and components accessible from three sides and the bottom
Reflectors extend to bottom of tube; end capped SEM (U)	Improved radiant output due to increased heat entrapment
Three-try ignition (every 35 minutes, if necessary)	Reliable light off

Applications

Industrial buildings, manufacturing facilities, garages, metal working shops, warehouses

Model	Design
SEM/B	• In-line tube and reflectors in ten-foot sections
SEM/BU	• Parallel tubes under single reflector, vaned turning box
SEM (U)	• Special high emissivity coating from second tube to end (175, 200: 3rd tube to end)

Standard SEM 110-40 Parts	Optional Accessories
<ul style="list-style-type: none"> 1- Burner assembly 1- 10' aluminized tube with flange 3- 10' steel tubes (with emissive coating) 4- 10' reflectors 3- Coupling kits (heavy-duty clamps) 2- Reflector end caps 8- Wire tube/reflector hangers 1- Aluminized steel turbulator (factory installed) 1- Stainless steel flexible gas connector 	<ul style="list-style-type: none"> 90 degree elbow kit 4" or 6" roof or wall flue vent terminal 4" x 4" x 6" flue Vent TEE Couplings for TEE Line voltage thermostat Side reflector extensions Fresh air inlet adapter Fresh air inlet vent cap

SEM/B, SEMU/SEBU Specifications

DIMENSIONS AND SPECIFICATIONS

MODEL	CAPACITY (BTU/HR.) SEA LEVEL TO 4,500*	AVAILABLE LENGTH					
		20'	30'	40'	50'	60'	70'
SEM/B-200	200,000				✓	✓	✓
SEM/B-175	175,000				✓	✓	✓
SEM/B-155	155,000			✓	✓	✓	
SEM/B-130	130,000		✓	✓	✓		
SEM/B-110	110,000		✓	✓	✓		
SEM/B-80	80,000	✓	✓	✓			
SEM/B-60	60,000	✓	✓				
Heater length		21'	30'-8"	40'-4"	50'	59'-8"	69'-4"
Shipping weight (LBS.)		130	180	225	290	330	400

MODEL	CAPACITY (BTU/HR.) SEA LEVEL TO 4,500*	AVAILABLE LENGTH		
		10'	20'	30'
SEMU/BU-200	200,000			✓
SEMU/BU-175	175,000			✓
SEMU/BU 155	155,000		✓	✓
SEMU/BU-130	130,000		✓	
SEMU/BU-110	110,000		✓	
SEMU/BU-80	80,000	✓		
SEMU/BU-60	60,000	✓		
Heater length		12'-9"	22'-3"	31'-11"
Shipping weight (LBS.)		135	230	335

* U.S.A: SEA LEVEL TO 2,000';
de rate heater 4% for each additional 1000' of elevation

Gas Pressure Line
Minimum
6" W.C. N.G.
11" W.C. L.P.

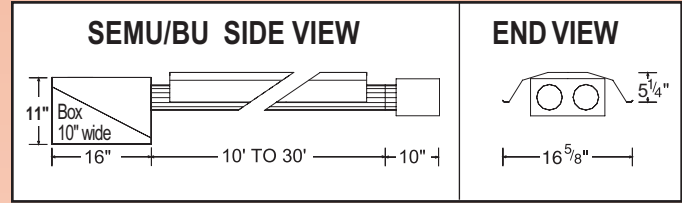
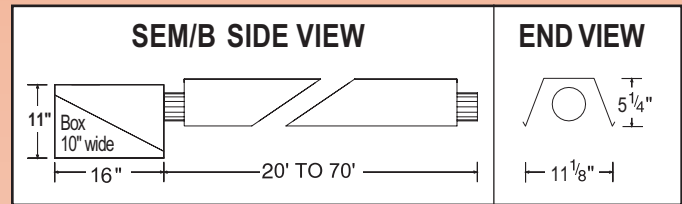
Line Maximum
14" W.C. N.G.
14" W.C. L.P.

Manifold
3.5" W.C. N.G.
10" W.C. L.P.
1/2" inlet

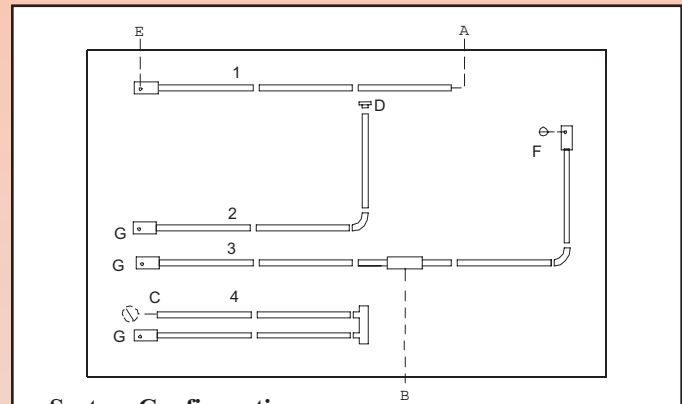
Electrical:
120V, 60HZ

CLEARANCES TO COMBUSTIBLES

MODEL	A	B	C	D	E	F
SEM/B 200 & 175	9"	24"	68"	9"	45"	68"
SEM/B 155	7"	13"	64"	8"	34"	64"
SEM/B 130	6"	10"	60"	7"	26"	56"
SEM/B 110	6"	10"	60"	6"	20"	54"
SEM/B 80	5"	8"	42"	5"	18"	38"
SEM/B 60	4"	7"	33"	4"	14"	34"
MODEL	G	H	J	K	L	M
SEMU/SEBU 200 & 175	8"	38"	68"	9"	54"	68"
SEMU/SEBU 155	6"	34"	64"	9"	50"	64"
SEMU/SEBU 130	6"	32"	60"	9"	40"	56"
SEMU/SEBU 110	6"	30"	60"	9"	36"	54"
SEMU/SEBU 80	5"	24"	42"	9"	31"	38"
SEMU/SEBU 60	4"	20"	33"	7"	25"	34"



FLEXIBLE LAYOUT



System Configuration

1. Straight line
2. "L" tube with 90 degree elbow kit
3. Twinned tubes into common TEE flue vent
(bothe heaters must operate on one common thermostat)
4. SEMU/SEBU double tube

Venting Options

- A) Flue vent through wall 4"
- B) Flue vent through wall or roof 6"
- C) Flue vent through roof 4"
- D) Flue vent into building, exhaust fan interlocked with heater
- E) Combustion air intake from outside through wall
- F) Combustion air intake from outside through roof
- G) Combustion air intake from inside building

Distributed by:

Schwank
infra-red gas heaters
ISO 9001: 2000 REGISTERED



Schwank Inc. 5285 Bradco Blvd., Mississauga, Ontario L4W 2A6
Telephone: (905) 712-4766 / Fax: (905) 712-8336
2 Schwank Way, PO Box 988, Waynesboro, Georgia, USA 30830
Telephone: (706) 554-6191 / Fax: (706) 554 9390
e-mail: info@schwankheaters.com www.schwankheaters.com